

BALDOR • RELIANCE

Customer information packet

XEFRPM401004

100HP, 1800, 460V, HL405T, TEFC, F1

Specifications

Enclosure	TEFC
Frame	HL405T
Frame Material	Exposed Laminations
Frequency	60.00 Hz
Output @ Frequency	100.000 HP @ 60 HZ
Phase	3
Synchronous Speed @ Frequency	1800 RPM @ 60 HZ
Voltage @ Frequency	460.0 V @ 60 HZ
Agency Approvals	CCSA US NEMA PREMIUM
Auxillary Box	No Auxillary Box
Base Indicator	Rigid
Bearing Grease Type	Polyrex EM (-20F +300F)
Constant Torque Speed Range	1-60
Current @ Voltage	98.000 A @ 460.0 V
Duty Rating	CONT
Feedback Device	NO FEEDBACK
Frame Prefix	HL
Heater Indicator	No Heater
High Voltage Full Load Amps	98.0 a
Insulation Class	H
KVA Code	F
Motor Standards	NEMA
Mounting Arrangement	F1
Overall Length	40.56 IN
Product Family	Fan - Centrifugal
Pulley End Bearing Type	Ball
Pulley Face Code	Standard
Service Factor	1.15
Shaft Diameter	2.874 IN
Shaft Ground Indicator	No Shaft Grounding
Shaft Rotation	Reversible

Part detail

Revision	G
Type	AC
Mech. spec.	
Base	
Status	PRD/A
Elec. spec.	LS7024A
Layout	619705-001
Eff. date	04-23-2019
CD Diagram	422927-001
Poles	04
Leads	
Proprietary	False
Created date	06-03-2016

Speed	1800 rpm
Thermal Device - Bearing	None
Thermal Device - Winding	Normally Closed Thermostat

Nameplate

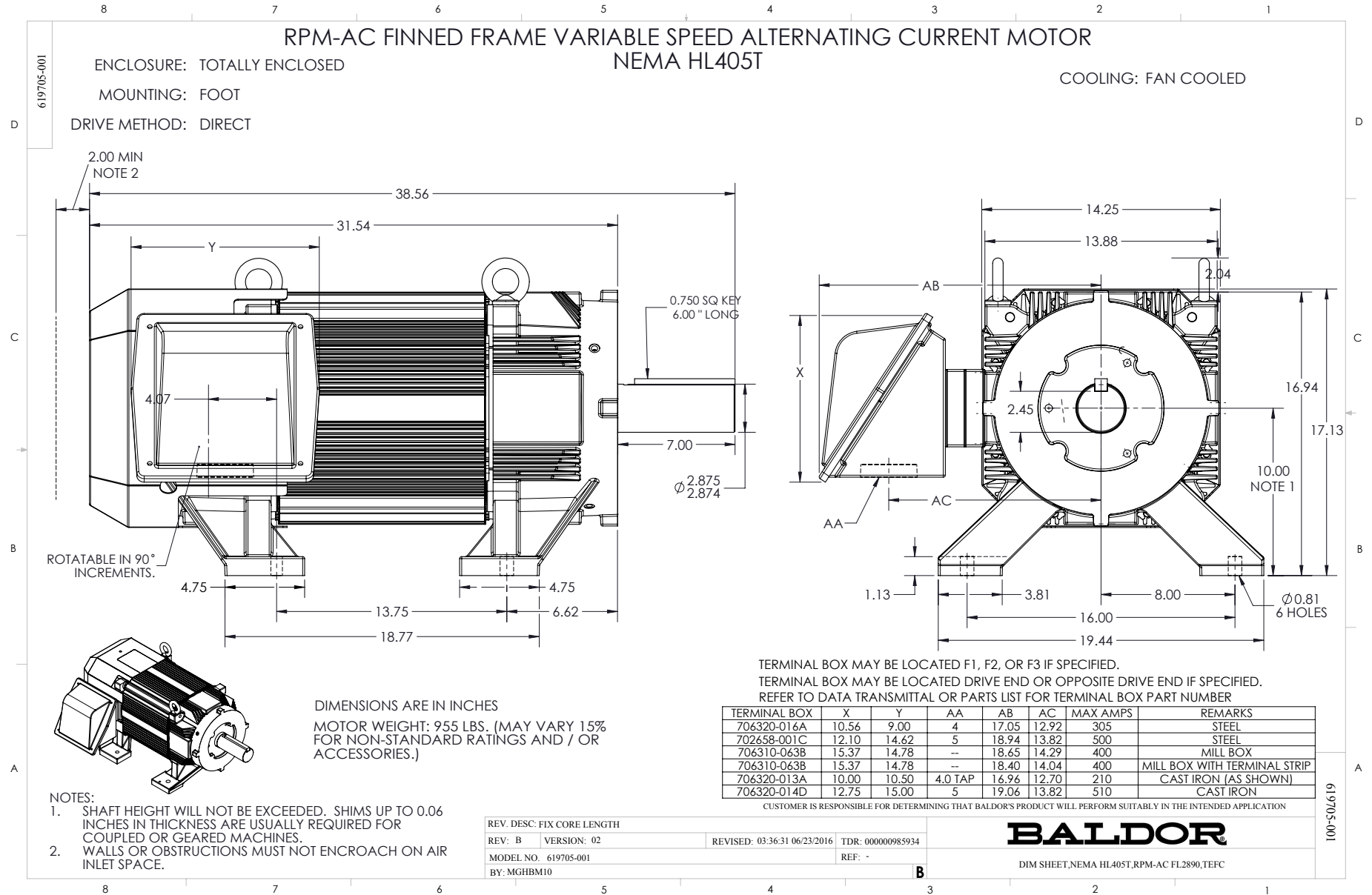
000613007QF

	DUTY	HP	RPM	AMPS	VOLTS	HZ						
	CONT	100	1800	98	460	60						
CAT.NO.	XEFRPM401004		SPEC. NO.		H40-A000-0001							
SER.NO.			FRAME SIZE		HL405T	TYPE PSM						
AMB.	40	S.F.	1.15	ENCL.	TEFC	PH	3	DESIGN	B	CODE	F	
NEMA NOM. EFF	97.3		GUARANTEED EFFICIENCY		96.7		POWER FACTOR		99.1		INSUL. CLASS	H
D.E. BRG.	75BC02J30X		O.D.E. BRG.		55BC02J30X							
VPWM INVERTER DUTY @1.0SF	CHP HZ	60-90		CT HZ	1-60		VT HZ	0-60				
	X/T											

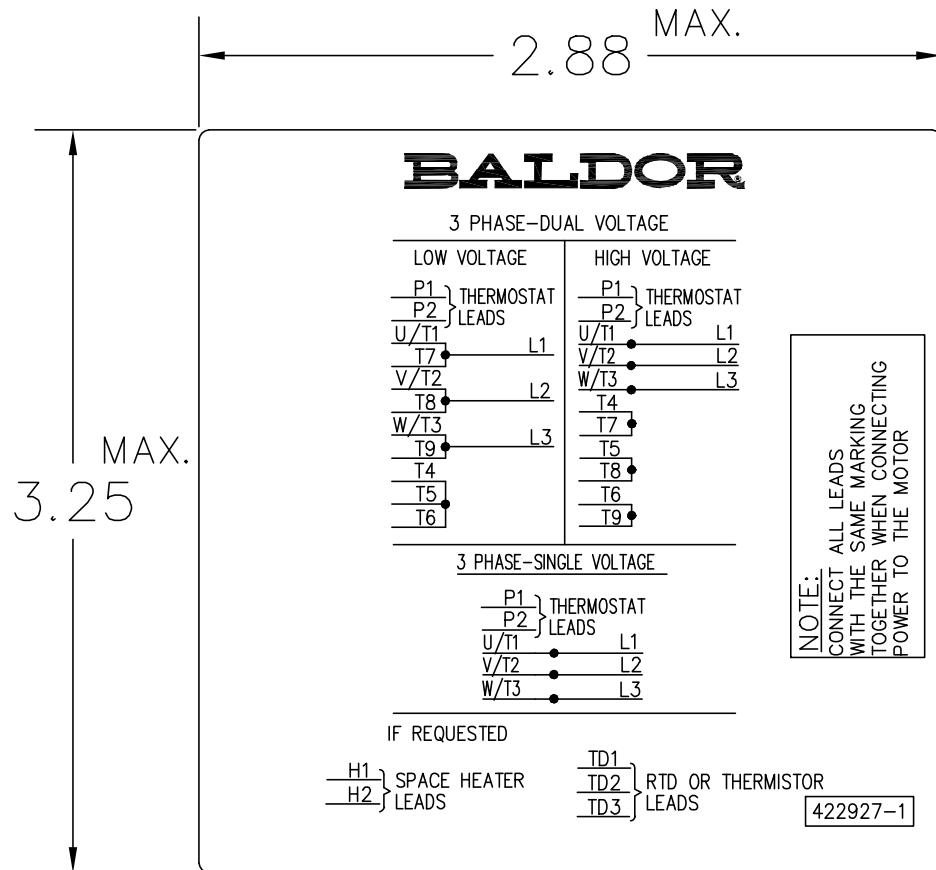
000692000VY

MEAS OPEN CIRCUIT VOLTAGE

IS VOLTS AT RPM.



422927-001



NOTE:
DATA TO BE SIZED
SO THAT IT FITS INTO
MATERIAL DECAL
DIMENSIONS. MAKE
LETTERS & NUMBERS
AS LARGE AS POSSIBLE.

MATERIAL: CERAMATIC DGF-P4
PERMA GRIP ADHESIVE

ALL LETTERS, NUMBERS
AND LINES TO BE BLACK
ON WHITE BACKGROUND.

422927-001

REV. DESC: CHANGE BACKGROUND COLOR FROM GOLD TO WHITE		
REV. LTR: B	VERSION: 02	TDR: 00000788708
FILE: \RGG\00000\203	REVISED: 08:09:29 03/04/2013	
MTL: -	BY: RGGWT	

BALDOR

EXTERNAL CONNECTION LABEL

SH 1 of 1